

RESOLUTION NO. 2006-277

A RESOLUTION GRANTING TO THE ELK GROVE COMMUNITY SERVICES DISTRICT, IN FEE SIMPLE, LOT A FOR LANDSCAPE PURPOSES AND LOT B FOR OPEN SPACE PURPOSES LOCATED WITHIN NEWTON RANCH UNIT NO. 3 (SUBDIVISION NO. 02-370-03)

WHEREAS, The City of Elk Grove is fee owner of the property as described in "Exhibit A" Legal description attached hereto; and

WHEREAS, the Elk Grove Community Services District (EGCSD) is willing to own and maintain these properties provided that ownership is granted to the EGCSD; and


WHEREAS, the Grant Deed for the lots being granted to the EGCSD is attached hereto.

NOW, THEREFORE, BE IT RESOLVED that the Mayor of the City of Elk Grove is hereby authorized and directed to execute the attached Deed and to have the City Clerk attest to the signature.

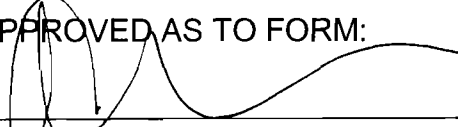
PASSED AND ADOPTED by the City Council of the City of Elk Grove on this 8th day of November 2006.



RICK SOARES, MAYOR of the
CITY OF ELK GROVE

ATTEST:


PEGGY E. JACKSON, CITY CLERK

APPROVED AS TO FORM:


ANTHONY B. MANZANETTI,
CITY ATTORNEY

RECORD AT REQUEST OF:
No fee for recordation Govt. Code Sec. 6103
RETURN RECORDED DOCUMENT TO:
Elk Grove Community Services District
Department of Parks and Recreation
8820 Elk Grove Blvd., Suite 3
Elk Grove, California 95624

NO COUNTY TRANSFER TAX DUE

The Above Space For Recorder's Use Only

O.K. to Grant _____
Date: _____

Project Name: Newton Ranch Unit No. 3
Address:
A.P.N.: 134-0750-045, 046
Project No.: EG-03-497.03

THIS TRANSACTION IS EXEMPT FROM CALIFORNIA DOCUMENTARY TRANSFER TAX PURSUANT TO SECTION 11922 OF THE CALIFORNIA REVENUE AND TAXATION CODE. THIS DOCUMENT IS EXEMPT FROM RECORDING FEES PURSUANT TO SECTION 27383 OF THE CALIFORNIA GOVERNMENT CODE.

GRANT DEED

FOR VALUABLE CONSIDERATION, receipt and sufficiency of which is hereby acknowledged,

The City of Elk Grove

hereby grants title in Fee Simple to the **Community Services District**, all that real property in the City of Elk Grove, County of Sacramento, State of California, described as follows:

See Exhibit A, legal description attached hereto and made a part hereof.

Executed this _____ day of _____, 20____.

GRANTORS: _____
(print name)

By: _____
(print name) _____

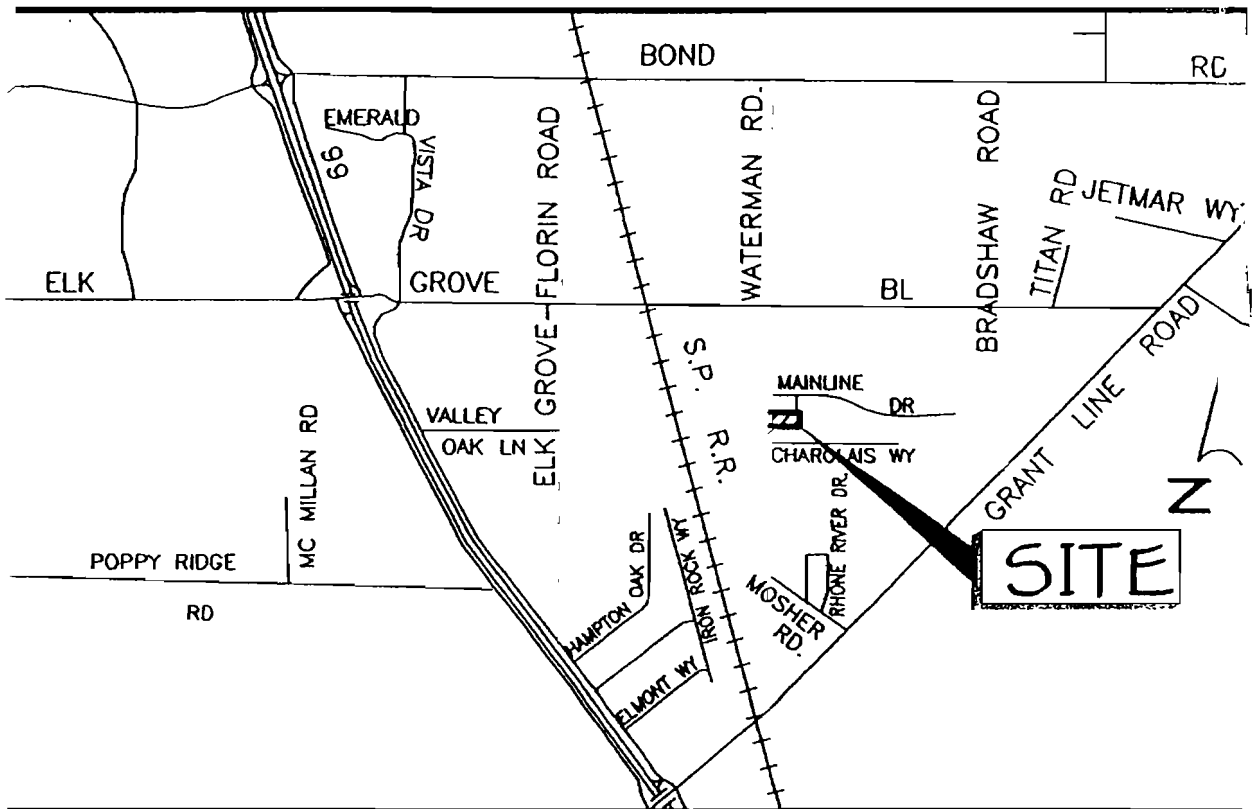
By: _____
(print name) _____

EXHIBIT "A"
Legal Description

Lot A as shown on that certain map of "**Subdivision No. 03-497.03 of Newton Ranch Unit No. 3**" filed in Book 340 at Page 11, of Maps, Records of Sacramento County.

Lot B as shown on that certain map of "**Subdivision No. 03-497.03 of Newton Ranch Unit No. 3**" filed in Book 340 at Page 11, of Maps, Records of Sacramento County.

**ATTACHMENT 2
VICINITY MAP**



VICINITY MAP

NO SCALE

SUBDIVISION NO.: 03-497.03 OF
NEWTON RANCH UNIT NO. 3

A PORTION OF THE S.W. 1/4 OF
 SEC. 5, T. 6 N., R. 6 E., M. 10 M

CITY OF ELK GROVE, COUNTY OF SACRAMENTO, STATE OF CALIFORNIA

APRIL 2005

SCALE: 1"=40'

BAKER-WILLIAMS ENGINEERING GROUP

Sheet 2 of 2

340-11-2

NOTES

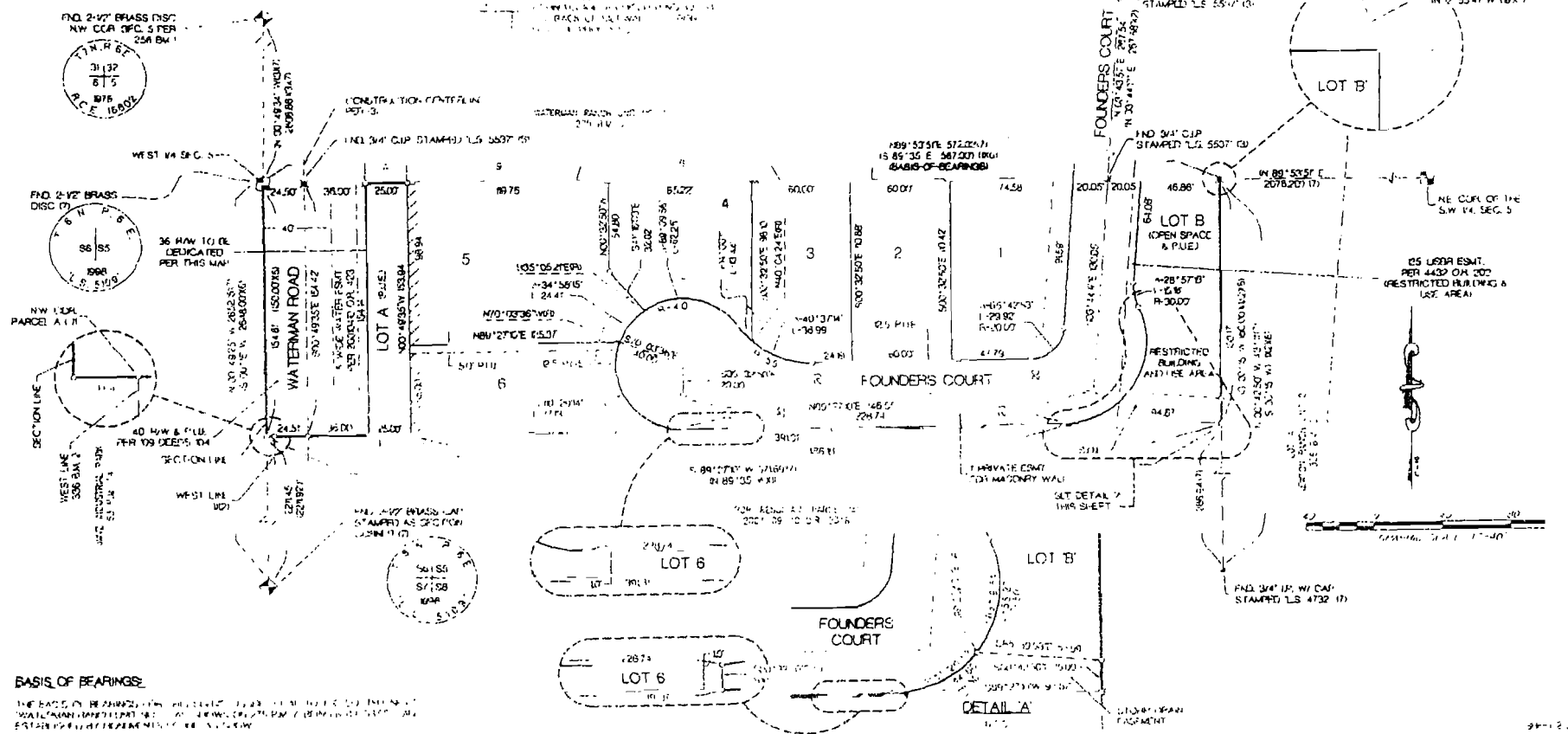
1. THE PROPERTY LINES ARE TO BE SET BY THE SURVEYOR.
2. ALL THE NEIGHBORING LOTS ARE TO BE SURVEYED AND THE BOUNDARIES THEREOF ARE TO BE SHOWN ON THIS PLAN.
3. ALL DISTANCES ARE GIVEN IN FEET AND DECIMALS THEREOF.
4. THE SUBDIVISION COULD BE DIVIDED INTO LOTS OF VARIOUS SIZES AND SHAPES AS MAY BE DESIRED.
5. WATER MAIN TAPES AND FIRE ALARMS SHALL BE INSTALLED AND MAINTAINED IN ACCORDANCE WITH THE REQUIREMENTS OF THE CALIFORNIA FIRE DEPARTMENT AND THE CALIFORNIA WATER SUPPLY BOARD TO THE SATISFACTION OF SAID AGENCIES.
6. ALL UTILITIES (WATER, GAS, ELECTRIC, ETC.) SHALL BE INSTALLED AND MAINTAINED IN ACCORDANCE WITH THE REQUIREMENTS OF THE CALIFORNIA WATER SUPPLY BOARD.
7. LOT A SHALL BE THE SITE OF A WATER TOWER. THE TOWER SHALL BE CONSTRUCTED AND MAINTAINED IN ACCORDANCE WITH THE REQUIREMENTS OF THE CALIFORNIA WATER SUPPLY BOARD.
8. MAINTENANCE OF THE TOWER SHALL BE THE RESPONSIBILITY OF THE OWNER OF SAID LOT.

LEGEND

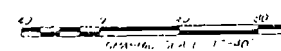
- 1. 1/4" = 40' SCALE
- 2. 1/4" = 40' SCALE
- 3. 1/4" = 40' SCALE
- 4. 1/4" = 40' SCALE
- 5. 1/4" = 40' SCALE
- 6. 1/4" = 40' SCALE
- 7. 1/4" = 40' SCALE
- 8. 1/4" = 40' SCALE
- 9. 1/4" = 40' SCALE
- 10. 1/4" = 40' SCALE
- 11. 1/4" = 40' SCALE
- 12. 1/4" = 40' SCALE
- 13. 1/4" = 40' SCALE
- 14. 1/4" = 40' SCALE
- 15. 1/4" = 40' SCALE
- 16. 1/4" = 40' SCALE
- 17. 1/4" = 40' SCALE
- 18. 1/4" = 40' SCALE
- 19. 1/4" = 40' SCALE
- 20. 1/4" = 40' SCALE

REFERENCES

- 1. 1/4" = 40' SCALE
- 2. 1/4" = 40' SCALE
- 3. 1/4" = 40' SCALE
- 4. 1/4" = 40' SCALE
- 5. 1/4" = 40' SCALE
- 6. 1/4" = 40' SCALE
- 7. 1/4" = 40' SCALE
- 8. 1/4" = 40' SCALE
- 9. 1/4" = 40' SCALE
- 10. 1/4" = 40' SCALE
- 11. 1/4" = 40' SCALE
- 12. 1/4" = 40' SCALE
- 13. 1/4" = 40' SCALE
- 14. 1/4" = 40' SCALE
- 15. 1/4" = 40' SCALE
- 16. 1/4" = 40' SCALE
- 17. 1/4" = 40' SCALE
- 18. 1/4" = 40' SCALE
- 19. 1/4" = 40' SCALE
- 20. 1/4" = 40' SCALE



BASIS OF BEARINGS
 THE BASIS OF BEARINGS IS THE MERIDIAN OF THE CITY AND COUNTY OF SACRAMENTO, CALIFORNIA, AS ESTABLISHED BY THE STATE ENGINEER.



11-20-05

**CERTIFICATION
ELK GROVE CITY COUNCIL RESOLUTION NO. 2006-277**

STATE OF CALIFORNIA)
COUNTY OF SACRAMENTO) ss
CITY OF ELK GROVE)

I, Peggy E. Jackson, City Clerk of the City of Elk Grove, California, do hereby certify that the foregoing resolution was duly introduced, approved, and adopted by the City Council of the City of Elk Grove at a regular meeting of said Council held on November 8, 2006 by the following vote:

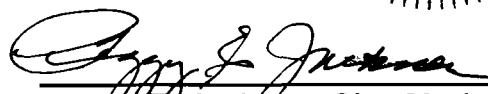
AYES : COUNCILMEMBERS: Soares, Scherman, Briggs, Cooper, Leary

NOES : COUNCILMEMBERS: None

ABSTAIN : COUNCILMEMBERS: None

ABSENT: COUNCILMEMBERS: None





**Peggy E. Jackson, City Clerk
City of Elk Grove, California**